



## **Installation Instructions for SS175 Idler Arm Support Assembly**

**For GM Light Duty K Pickup Trucks  
Year 1999 to 2010 2500, 3500 & 1999 to 2006 1500 (2 bolt mount)**

**Caution:** Proper service and repair procedures are essential for safe and reliable installation of chassis parts. They require experience and tools that may be specially designed for the purpose. These parts must be installed by a qualified mechanic; otherwise an unsafe vehicle and/or personal injury may occur.

**•To ensure maximum performance from a SuperSteer® Idler Arm Support Assembly, the front-end alignment must be re-checked after installation.**

**Note:** Play in other areas of the suspension may adversely affect alignment specifications and performance of SuperSteer® Idler Support Assembly. It is not necessary to raise the vehicle for installation of the SuperSteer® Idler Arm Support Assembly; however, a hoist or pit is recommended.

**The SS175 Idler Arm Support is not warranted for off-road use  
or on modified suspensions.**

### **Instructions**

1. Remove the front shield – set it aside with the hardware.
2. Disengage the idler arm by loosening the large nut at the bottom end of the OEM unit using a large mouth tie-rod separator.
3. Remove the nut, lock washer and idler arm – discard the nut and lock washer. Set the idler arm aside.
4. Remove the mounting bolts (quantity of 2), washers and locknuts and the OEM unit – discard the hardware – salvage the OEM unit.
5. Install the SuperSteer® Idler Arm Support Assembly in the reverse manner above, using NEW 9/16–12, grade 8 bolts, flat washers and locknuts. (Flat washers must be under the bolt head and between the nut and the frame-bracket.) Torque to 100 ft. lbs.
6. Reassemble the idler arm to the SuperSteer® Idler Arm Support Assembly, using the new lock washer and nut supplied.  
Torque to 100-125 ft. lbs.
7. Check the alignment per the vehicle's manual.

**Optional Weld-In gussets are available for additional support.**

**SS120 - Half ton trucks and SUV's  
SS125 - 3/4 and 1 ton trucks and SUV's**

# Installation Instructions for Hummer H2

1. Remove the front shield, set aside with hardware
2. Remove the nut at the bottom of the OEM unit which holds the idler arm in place. Disengage the idler arm from the OEM support assembly using a large mouth tierod separator.
3. Discard the nut and set the idler arm aside.
4. Remove the mounting bolts(quantity of 2), washers , lock nuts and the OEM unit- discard the hardware and the OEM unit. **Hummer H2 specific** (See Figure A for existing H2 brace)
5. Cut the top plate of the brace so it is flush with side braces. Cut the bottom plate 1/2" and bend it down. (See figure B for cut brace)
6. Weld the gusset (SS125) in the center of the brace, forward to frame (See figure C) Gussets optional on pickups.
7. Install the **SuperSteer** Idler Arm Support Assembly (SS175) in the reverse manner above, using NEW 9/16-12 grade 8 bolts (flat washers must be under the bolt head and between the nut and the frame bracket.) Torque to 100 ft. LBS.
8. Reassemble the idler arm to the SS175, using the new lock washer and nut supplied. Torque to 100-125 ft. LBS. Check the alignment per vehicle's manual.

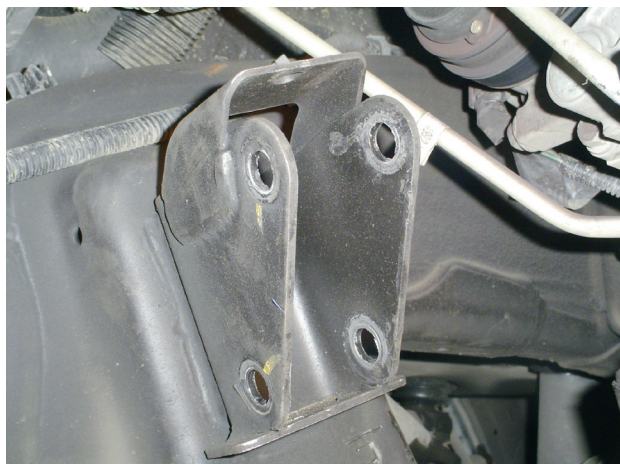


Figure A - Existing Brace

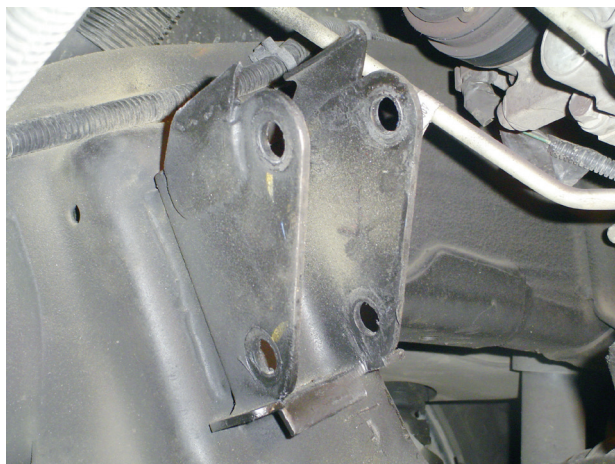


Figure B - Cut Brace

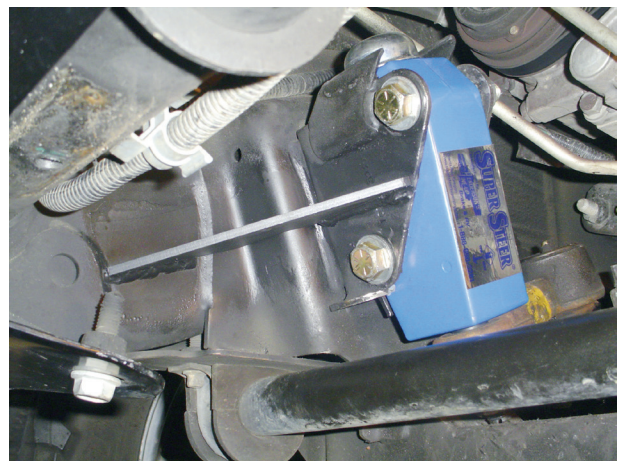


Figure C - SS125 gusset welded to center of brace with SS175 installed

## Optional Weld-In Gussets



SS125 For 3/4  
& 1 Ton Trucks



SS120 For 1/2  
Ton Trucks

**Your comments are greatly appreciated. Please feel free to contact SuperSteer® at 888-898-3281 or e-mail at [john@supersteerparts.com](mailto:john@supersteerparts.com)**



A Division  
of

