

## INSTALLATION INSTRUCTIONS

### FORD E-350 / 450 CLASS C (V-10) 2010-2011

PARTS NEEDED:   **31-140**           **SAFE-T-PLUS** unit (Silver)

**E-353K14**   **Mounting Hardware Kit** consists of:

                                  25-353           Anchor Bracket

                                  25-415           Tie Rod Bracket

                                  12-516-1250K   5/16 X 1-1/4" U-Bolt Kit

Anchor Bracket 25-335 mounts on driver's side (left side) of vehicle in between stabilizer bar bracket and frame (see sketch).

Tie Rod Bracket 25-415. Using U-Bolts provided, install Tie Rod Bracket on tie rod (see sketch). **DO NOT TIGHTEN AT THIS TIME.**

Thoroughly clean the section to tie rod before attaching bracket.

- Step 1.           Set front wheels of vehicle to a straight-ahead position. This is **IMPORTANT.** Later adjustment of the tie rod bracket may be avoided if front wheels are set perfectly straight.
- Step 2.           If unit is equipped with damper, **IT MUST BE COMPLETELY REMOVED.**
- Step 3.           Loosen bolts on the left and right hand stabilizer bar bracket.
- Step 4.           Remove left-hand stabilizer bar bracket and place SAFE-T-PLUS Anchor Bracket in between frame and stabilizer bar bracket (see sketch).
- Step 5.           Replace stabilizer bar bracket.
- Step 6.           Tighten all bolts on bracket and other stabilizer bolts.
- Step 7.           Install SAFE-T-PLUS unit to Anchor Bracket and Tie Rod Bracket using rubber bushing kit provided.

**NOTE:**           **All grommets are to be tightened until they bulge over the edge of the steel caps or until they are approximately 1/4" thick.**

- Step 8.           Attach Tie Rod Bracket to tie rod with U-Bolts provided (see sketch).
- Step 9.           Check to be sure installed unit clears all other parts of vehicle by turning steering wheel to both extreme right and left positions. If unit scrapes or binds at any point, review these instructions and make necessary corrections by rotating unit on the tie rod to obtain necessary clearance.

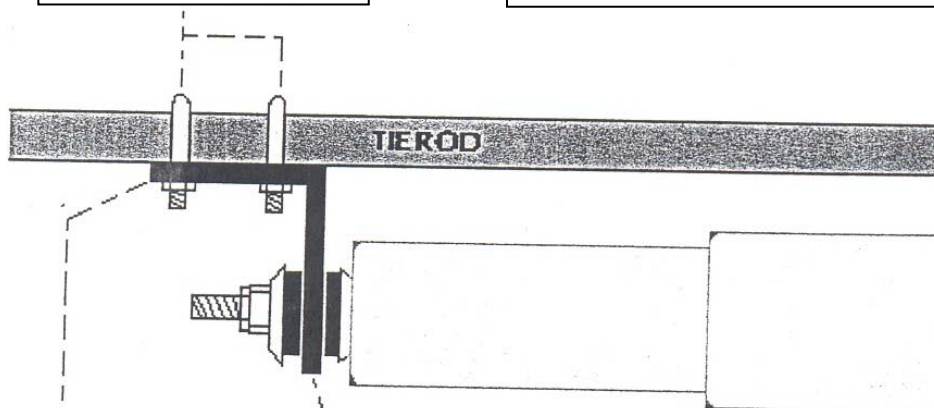
Step 10.

**ROAD TEST & ADJUSTMENT PROCEDURES:** To ensure proper alignment and installation of the SAFE-T-PLUS unit, the vehicle should be road tested. Take along a socket wrench to fit the U-Bolts on the tie rod. While driving on a straight stretch of road, vehicle should easily follow a straight course, if not, adjustment is necessary. To adjust, hold steering wheel in a straightforward position, stop vehicle, and set brakes. Loosen nuts on Tie Rod U-Bolts and allow unit to self-center. (Frequently this movement is not noticeable). Retighten nuts and test drive again. Repeat this step if necessary until vehicle will hold a straight line. Note: Continue to hold the steering wheel in a straightforward position until the adjustment has been completed. Otherwise the wheels will return to the pulling position instead of the straight-ahead position desired. If you need additional assistance, please call us toll-free at (800) 872-7233.



5/16 x 1 1/4 U-bolts

Anchor Bracket installs  
between Drivers side Sway  
Bar mount and chassis rail



Tie Rod bracket may need to  
be rotated up or down for  
clearance