



Installation Instructions DUAL REAR AUXILIARY SWAY BAR KIT- Part # SS293

Estimated install time is 5 hours

This product is designed to fit 2006-2020 Ford F53 V10 Chassis, 24-26k GVW

This kit includes 2 Roadmaster rear anti-sway bars that are installed in addition to the factory anti-sway bar and all the extra hardware to install them. Note that some of the hardware included with the individual sway bar kits will not be used. The 1139-144 is forward facing with 1 3/4" diameter. The 1139-149 is rearward facing with 1 5/8" diameter.

Caution: Proper service and repair procedures are essential for safe and reliable installation of chassis parts. They require experience and tools that may be specially designed for the purpose. These parts should be installed by a qualified mechanic; otherwise an unsafe vehicle and/or personal injury may occur.

Item Description	Quantity
1139-144B Supersteer Rear Auxiliary Sway Bar Kit	1
1139-149B Supersteer Rear Auxiliary Sway Bar Kit	1
B937 Sway Bar Axle Plate	2
B405 Sway Bar Spacer Plate	2
1/2"x2-1/4" Grade 8 Bolts	4
B1045 Sway Bar Spacer Plate	4

SS293 Rear Auxiliary Sway Bar Kit Installation Instructions

A. Preparation

Move the coach to a level, flat surface. If necessary, drive the rear wheels of the coach onto 4" high block and set the brakes or you may drive the coach over a work pit and chock the front wheels. Block off adequate space at the rear of the coach to work.

B. 1139-144B Rear Auxiliary Sway Bar Installation (forward of rear axle)

Follow Steps 1 through 4 of included Roadmaster 1139-144 installation instructions.

On Step 5, using one **B405 Spacer Plate** on each side, install the anti-sway bar on the underside of the **B937 Sway Bar Axle Plate**, rather than the B777 plates included in the 1139-144 kit. The B777 plates will not be used. Use the rearward holes in the B937 mounting plates as shown in **Figure 1** at right, rather than the forward holes indicated in the 1139-144 installation instructions.

The B405 Spacer Plates will go between the saddle brackets and the B937 Axle Plates in order to lower the sway bar. To make up for the added thickness of the spacer plates, use the **4x 1/2"x2-1/4" Grade 8 Bolts** provided in the SS293 kit rather than the 350703-00 1/2"x2" Bolts included in the 1139-144 Sway Bar kit. Use the 350308-80 washers and 350259-00 nuts provided with the 1139-144 kit. The 350703-00 1/2"x2" bolts included with the 1139-144 kit will not be used.

Follow Step 6 instructions, using the bolt holes on the shackles which provide the greatest shackle length as shown in **Figure 2** at right.

Follow Steps 7 through 9 of 1139-144 installation instructions, completing installation of new auxiliary sway bar.

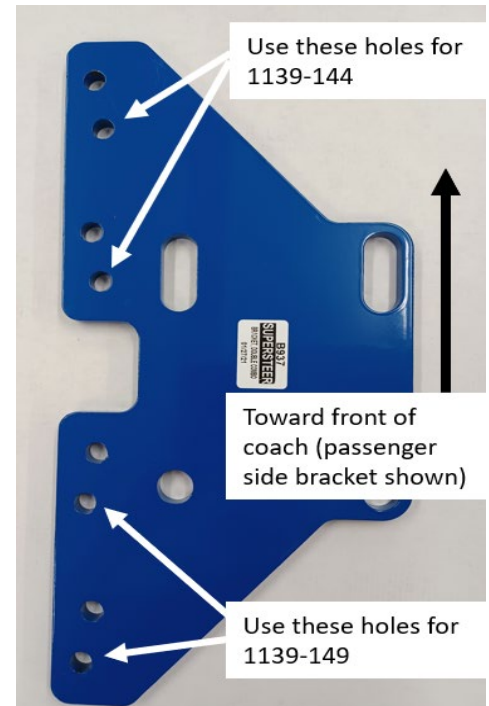


Figure 1

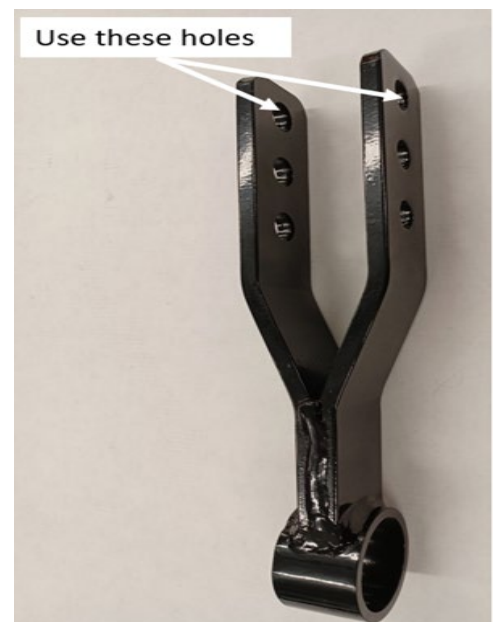


Figure 2

C. Factory Rear Sway Bar Spacer Installation

Loosen the 4 bolts on the saddle brackets of the factory rear sway bar. Remove the bolts on one side and install **2x B1045 Sway Bar Spacer Plates** between the saddle bracket and the axle. Loosely reinstall bolts.

Repeat on the other side, installing the other 2x B1045 Spacer Plates between the saddle bracket and axle.

Torque factory saddle bracket bolts to 130-140 ft-lbs (factory bolts are long enough to still have adequate thread engagement even with added spacers).

D. 1139-149B Rear Auxiliary Sway Bar Installation (Behind rear axle)

Follow Steps 1-2 of instructions included with 1139-149B kit.

Skip Step 3 as the B937 plates installed for the 1139-144 bar will also be used to mount the 1139-149 bar. The B777 plates will not be used.

Follow Step 4 of the 1139-149 instructions.

Follow Step 5 but install the bushing clamps to the B937 plate as shown in **Figure 1** on the previous page of these instructions.

Follow Step 6, completing the installation.

NEXT STEPS:

- **Please do a test drive to ensure proper installation.**
- **Warranty card. (Mail in or Complete Online)**
- **Re-check torque in 6 months.**

**Thank you for your purchase of the SuperSteer® SS293 Dual Rear
Auxiliary Sway Bar Kit**

Your comments are greatly appreciated. Please feel free to contact **SuperSteer®**
at 888-898-3281 or e-mail at **sales@supersteerparts.com**